

**Lovejoy / Sier-Bath Continuous Sleeve Gear Couplings**

**CCS Type Cut-Out Shifter Couplings**

The CCS Type coupling consists of two flex hubs, one special sleeve without lubrication holes and one accessory kit which includes a special seal for the hub that disengages to eliminate undue friction when the disengaged hub is turning in the sleeve. Standard hub is hand packed with grease.



**Features**

- Permits quick disengagement of driver and driven shafts without disassembling the coupling
- Widely used on dual drives and equipment operated in tandem
- Special seal for disengaging hub
- Also available with pins to maintain sleeve in both engaged and disengaged positions

**CCS Type Performance Data**

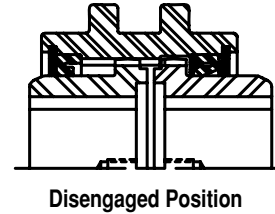
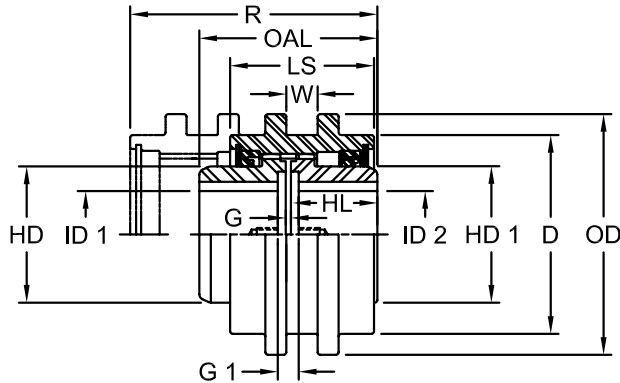
Size	Nominal Torque		Maximum Speed		ID1 - ID2				Weight		Parallel Misalignment		Max Angular Misalignment Degrees					
					Max Bore		Rough Stock Bore											
	in-lb	Nm	Unbal RPM	Bal RPM	in	mm	in	mm	lbs	kg	in	mm						
7/8	2,500	300	6,000	18,000	1.25	31	0.44	11	Weight Determined by W & OD Dimensions supplied by Customer	0.005	.13	1/2°						
1.5	7,600	900	5,000	15,000	1.63	42	0.63	16					0.007	.18				
2	20,200	2 300	4,200	12,600	2.13	56	0.73	19							0.007	.18		
2.5	30,200	3 400	3,750	11,250	2.63	70	0.88	22									0.010	.25
3	50,400	5 700	3,600	9,000	3.13	84	1.19	30										
3.5	88,200	10 000	2,800	8,400	3.63	97	1.25	32		0.012	.30							
4	126,000	14 200	2,400	7,200	4.13	111	1.75	44				0.007	.18					
4.5	184,000	20 800	2,200	6,600	4.75	130	2.38	60						0.007	.18			
5	270,000	30 600	2,100	6,300	5.75	160	2.88	73								0.007	.18	
6	378,000	42 700	2,000	6,000	6.75	186	3.88	99										0.009

**Ordering Information**

- Application: Driver and Driven.
- Type and size of coupling, horizontal, vertical etc.
- Power: Motor horsepower or torque requirement.
- Speed: Motor RPM or Driven RPM.
- Distance between shaft ends (BSE).
- Shaft sizes.
- Dimensions of Shifter Groove (width and outside diameter).
- Specify which hub will be stationary when coupling is disengaged.

**Lovejoy / Sier-Bath Continuous Sleeve Gear Couplings**

**CCS Type Cut-Out Shifter Couplings**



**CCS Type Dimensional Data**

Size	R	OAL	LS	W	ID1 - ID2				HL	BSE		OD	D	HD1	HD	T <sup>1</sup>
					Max Bore		Rough Stock Bore			G	G1					
					in	mm	in	mm								
7/8	4.31	3.13	2.56	Per Cust Specs	1.25	31	0.44	11	1.50	0.13	0.38	Per Cust Specs	3.31	1.985	2.00	0.38
1.5	5.38	3.75	3.31		1.63	42	0.63	16	1.81	0.13	0.50		3.75	2.365	2.38	0.63
2	5.75	4.25	3.44		2.13	56	0.73	19	2.06	0.13	0.50		4.75	3.235	3.25	0.56
2.5	6.41	4.75	3.88		2.63	70	0.88	22	2.25	0.25	0.75		5.50	3.925	3.94	0.69
3	7.69	5.50	4.63		3.13	84	1.19	30	2.63	0.25	0.75		6.63	4.735	4.75	0.75
3.5	9.63	8.75	4.88		3.63	97	1.25	32	4.25	0.25	0.75		7.50	5.365	5.38	0.81
4	10.69	9.00	5.81		4.13	111	1.75	44	4.38	0.25	0.75		8.75	6.235	6.25	1.00
4.5	11.44	10.25	5.94		4.75	130	2.38	60	5.00	0.25	0.75		9.50	7.235	7.25	1.00
5	14.00	12.25	7.50		5.75	160	2.88	73	6.00	0.25	0.75		10.75	8.235	8.25	1.50
6	15.44	13.00	8.56	6.75	186	3.88	99	6.38	0.25	0.75	12.25	9.485	9.50	1.88		

- Notes:
- 1 indicates: T is the length of travel to disengage sleeve.
  - The BSE (distance Between Shaft Ends) vary between G and G1.
  - Puller Holes are standard on sizes 4 through 6.
  - Puller Holes are available for sizes 7/8 through 3.5 at an additional charge.
  - Interference bores with no set screws are standard unless otherwise specified.
  - Inch bores and keyway tolerances conform to ANSI / AGMA 9002-B04.
  - For metric bores and keyway tolerances, consult Lovejoy Engineering Section.
  - Larger sizes are available, please consult Lovejoy Technical Support.